

**March 13, 2011**

*Dear Brothers and Sisters,*

*Please note that since Pasco County is on Spring Break this coming week, there will be no activities at the church on Wednesday evening, March 16.*

*However, please be aware that when the **Family Night Dinner** resumes on Wednesday, March 23, that dinner is now being served at 5:45 p.m. In addition, the price has been reduced, so that the cost per meal is now as follows:*

*\$5 – Adult (13 years and older)*

*\$3 – Child (3 to 12 years—under 3 free)*

*\$15 – Family maximum*

*I also want to draw your attention to the upcoming **Adult CE&F Classes** for Spring quarter, which starts Sunday, April 3, at 9:00 a.m. There are three options (more details listed on page 14):*

*Worldviews and Their Impacts, by Joe Burns*

*Survey of the New Testament, by Doug Hayman*

*MorningWalk, by Eileen Fritz*

*I do hope that you will take advantage of the opportunities for spiritual growth and maturity.*

*Grace and peace,*



# Welcome

*It is good to have you worship with us today. We are a church that seeks to love the Lord and to share this love with one another through the saving grace in Jesus Christ. We believe the Christian life is lived through the Holy Spirit who lives in the hearts of all believers. Join us in the celebration of Life with Jesus Christ.*

## Mission

The mission of the Tampa Bay Presbyterian Church is to bring people to Jesus Christ and **membership** in his church family, develop them to Christlike **maturity**, equip them for their **ministry** in the church and life **mission** in the world, in order to **magnify** God's name.


## Sunday Morning Schedule

Sunday School (all ages) - 9:00 a.m.

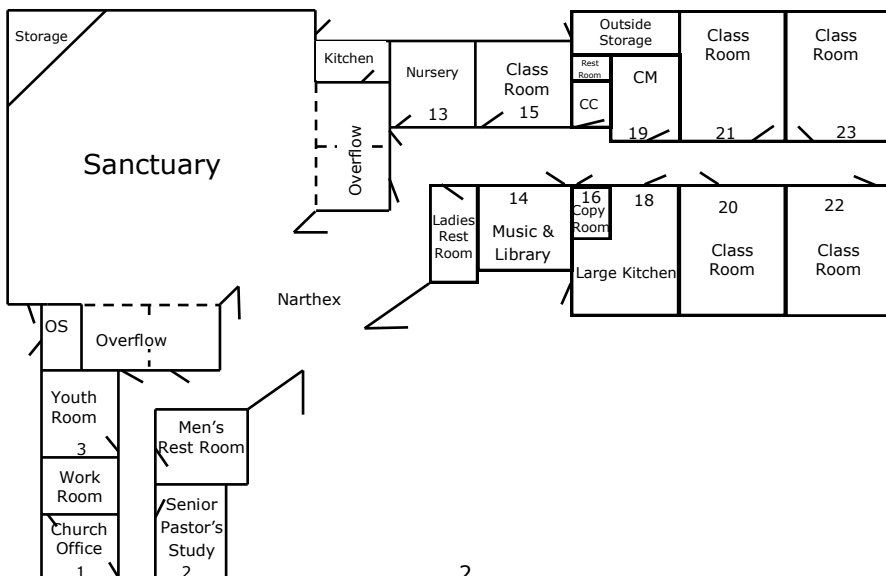
Worship—10:30 a.m.

During Sunday morning worship and Sunday school, childcare is provided for infants to age two in room 13.

Children from age three through second grade are invited to join us for worship in the sanctuary until dismissal to Children's Church which meets in room 20.

 Copies of Rev. Fritz's sermon as well as information on other church activities are available on the information board in the foyer.

## Church Map



# Lord's Day Worship Service

March 13, 2011

10:30 a.m.

First Sunday in Lent

\* Those able, please stand. Ushers may assist latecomers to find their seats.

† Children, ages 3 to Second Grade, are dismissed to Children's Church in Room 20.

Nursery care is provided in Room 13 during the Worship Service.

Parents: For the safety of your children, please accompany them to the bathrooms.

Please silence all communication devices. Thank you.

Please refrain from applause and flash photography during the Worship Service.

Please refrain from eating or drinking during the worship service.

*All songs reprinted with permission. CCLI License #264182.*

## Obedience to Christ

Hebrews 10:24-25

<sup>24</sup>And let us consider how to stir up one another to love and good works,  
<sup>25</sup>not neglecting to meet together, as is the habit of some, but encouraging one another, and all the more as you see the Day drawing near.

Hebrews 10:24-25

Live the New Life

**The Prelude**

**Debi Hensley**

**The Welcome and Announcements**

**Please sign the Friendship Register**

**\*The Greeting**

## God Calls Us to Worship

**\*The Call to Worship**

**Based on *Isaiah 43:19-21***

Leader: Let us worship God, who has done great things.

**People: We rejoice in our God, who made a way  
through the desert of this world.**

Leader: Let us worship God, who has caused streams of mercy  
to flow in the wasteland.

**People: We are the people God has formed through Christ;  
we worship him, and we rejoice!**

Leader: Let us worship God in spirit and in truth.

**People: We praise God for the grace that has saved us.  
Alleluia! We rejoice!**

**\*The Opening Song**

**Majesty (Hillsong)**

Here I am,  
Humbled by Your majesty,  
Covered by Your grace so free.  
Here I am,  
Knowing I'm a sinful man,  
Covered by the blood of the Lamb.  
Now I've found  
The greatest love of all is mine,  
Since You laid down Your life,  
The greatest sacrifice.

*Chorus 1*  
*Majesty, majesty.*  
*Your grace has found me just as I am,*  
*Empty-handed but alive in Your hands.*

Here I am,  
Humbled by the love that You give,  
Forgiven so that I can forgive.  
Here I stand,  
Knowing that I'm your desire,  
Sanctified by glory and fire.

Now I've found  
The greatest love of all is mine,  
Since You laid down Your life,  
The greatest sacrifice.

*Chorus 1*

*Chorus 2*  
*Majesty, majesty.*  
*Forever I am changed by Your love,*  
*In the presence of Your majesty.*  
*Majesty.*  
*Majesty.*  
*Majesty.*

**\*The Prayer of Invocation**

## **God Cleanses Us from Our Sin**

### **The Confession of Sin**

**Based on *Psalm 130:3-6***

**People: If you, O Lord, kept a record of sins,  
O Lord, who could stand?  
But with you there is forgiveness;  
therefore you are feared.  
I wait for the Lord, my soul waits,  
and in his word I put my hope.  
My soul waits for the Lord  
more than watchmen wait for the morning,  
more than watchmen wait for the morning.  
Almighty God, our Redeemer,  
in our weakness we have failed  
to be your messengers of forgiveness and hope.  
Renew us by your Holy Spirit,  
that we may follow your commands  
and proclaim your reign of love,  
through Jesus Christ, our Lord,  
who lives and reigns with you and the Holy Spirit,  
one God, now and forever. Amen.**

### **The Assurance of Forgiveness**

**Based on *Psalm 91:14-15***

**Leader: Those who love me, I will deliver, says the Lord;  
I will protect those who know my name.  
When they call to me, I will answer them;  
I will be with them in trouble,  
I will rescue them and honor them  
and show them my salvation.  
Receive the good news of the gospel:  
In Jesus Christ we are forgiven.**

## The Song of Response

## Amazing Grace, Our Chains Are Gone

**Amazing grace! How sweet the sound  
That saved a wretch like me!  
I once was lost but now am found;  
Was blind, but now I see.**

**'Twas grace that taught my heart to fear;  
And grace my fears relieved.  
How precious did that grace appear  
The hour I first believed.**

### *Chorus:*

***My chains are gone, I've been set free.  
My God, my Savior has ransomed me.  
And like a flood His mercy reigns,  
Unending love, amazing grace.***

**The Lord has promised good to me;  
His word my hope secures.  
He will my shield and portion be  
As long as life endures.**

### *Chorus 2X's*

**The earth shall soon dissolve like snow,  
The sun forbear to shine.  
But God who called me here below,  
Will be forever mine.  
Will be forever mine.**

**You are forever mine.**

## God Consecrates Us by His Word

### The Affirmation of Faith

### Westminster Shorter Catechism #21-22

**Leader:** Who is the redeemer of God's chosen ones?

**People:** The only redeemer of God's chosen is the Lord Jesus Christ, the eternal Son of God, who became man. He was and continues to be God and man in two distinct natures and one person forever.

Leader: How did Christ, the Son of God, become man?

**People: Christ, the Son of God, became man by assuming a real body and a reasoning soul. He was conceived by the power of the Holy Spirit in the womb of the Virgin Mary, who gave birth to Him; yet He was sinless.**

**The OT Scripture Reading      *Genesis 2:15-17,3:1-7*      RE Ken Pothoven**

<sup>15</sup>The LORD God took the man and put him in the garden of Eden to work it and keep it.<sup>16</sup>And the LORD God commanded the man, saying, "You may surely eat of every tree of the garden,<sup>17</sup>but of the tree of the knowledge of good and evil you shall not eat, for in the day that you eat of it you shall surely die."....

....<sup>1</sup>Now the serpent was more crafty than any other beast of the field that the LORD God had made.

He said to the woman, "Did God actually say, 'You shall not eat of any tree in the garden?'"<sup>2</sup>And the woman said to the serpent, "We may eat of the fruit of the trees in the garden,<sup>3</sup>but God said, 'You shall not eat of the fruit of the tree that is in the midst of the garden, neither shall you touch it, lest you die.'"<sup>4</sup>But the serpent said to the woman, "You will not surely die.<sup>5</sup>For God knows that when you eat of it your eyes will be opened, and you will be like God, knowing good and evil."<sup>6</sup>So when the woman saw that the tree was good for food, and that it was a delight to the eyes, and that the tree was to be desired to make one wise, she took of its fruit and ate, and she also gave some to her husband who was with her, and he ate.<sup>7</sup>Then the eyes of both were opened, and they knew that they were naked. And they sewed fig leaves together and made themselves loincloths.

**\*The Psalm**

**Psalm 51**

Create In Me a New Heart by Margaret Becker

**A sacrifice, pleasing to God is a broken spirit.  
You'll not despise a humble heart.  
You will hold and heal it.**

***Chorus***

***Renew, restore, Remember me, my Lord.  
Create in me a new heart after Yours, after Yours.  
Create in me a new heart after Yours, after Yours,  
My Lord.***

**Come, purify and I will be clean.  
Wash away all my shame.  
O let me hear gladness and joy.  
Let my mouth sing Your praise.**

***Chorus 2X***

**The NT Scripture Reading**

***Matthew 4:1-11***

**RE Ken Pothoven**

<sup>1</sup>Then Jesus was led up by the Spirit into the wilderness to be tempted by the devil.<sup>2</sup>And after fasting forty days and forty nights, he was hungry.<sup>3</sup>And the tempter came and said to him, "If you are the Son of God, command these stones to become loaves of bread."<sup>4</sup>But he answered, "It is written,

"Man shall not live by bread alone,  
but by every word that comes from the mouth of God."

<sup>5</sup>Then the devil took him to the holy city and set him on the pinnacle of the temple<sup>6</sup>and said to him, "If you are the Son of God, throw yourself down, for it is written,

"He will command his angels concerning you,"  
and

"On their hands they will bear you up,  
lest you strike your foot against a stone."

<sup>7</sup>Jesus said to him, "Again it is written, 'You shall not put the Lord your God to the test.'"<sup>8</sup>Again, the devil took him to a very high mountain and showed him all the kingdoms of the world and their glory.<sup>9</sup>And he said to him, "All these I will give you, if you will fall down and worship me."<sup>10</sup>Then Jesus said to him, "Be gone, Satan! For it is written,

"You shall worship the Lord your God



and him only shall you serve."

<sup>11</sup>Then the devil left him, and behold, angels came and were ministering to him.

**The Prayer of the Church**

**RE Ken Pothoven**

**The Offering**

Please place Friendship Registration form in Offering Plate

**The Offertory Song**

**Debi Hensley**

**The Preparatory Song**

**Great Is Your Glory**

**Soli Deo Gloria**

**The Dismissal**

Children (ages 3 to Second Grade) dismissed to Children's Church

**The Scripture**

***1 Corinthians 3:5-17***

**Rev. Freddy Fritz**

<sup>5</sup>What then is Apollos? What is Paul? Servants through whom you believed, as the Lord assigned to each.<sup>6</sup>I planted, Apollos watered, but God gave the growth.<sup>7</sup>So neither he who plants nor he who waters is anything, but only God who gives the growth.<sup>8</sup>He who plants and he who waters are one, and each will receive his wages according to his labor.<sup>9</sup>For we are God's fellow workers. You are God's field, God's building.

<sup>10</sup>According to the grace of God given to me, like a skilled master builder I laid a foundation, and someone else is building upon it. Let each one take care how he builds upon it.<sup>11</sup>For no one can lay a foundation other than that which is laid, which is Jesus Christ.<sup>12</sup>Now if anyone builds on the foundation with gold, silver, precious stones, wood, hay, straw—<sup>13</sup>each one's work will become manifest, for the Day will disclose it, because it will be revealed by fire, and the fire will test what sort of work each one has done.<sup>14</sup>If the work that anyone has built on the foundation survives, he will receive a reward.<sup>15</sup>If anyone's work is burned up, he will suffer loss, though he himself will be saved, but only as through fire.

<sup>16</sup>Do you not know that you are God's temple and that God's Spirit dwells in you?<sup>17</sup>If anyone destroys God's temple, God will destroy him. For God's temple is holy, and you are that temple.

**The Prayer of Illumination**

**The Sermon**

**Rev. Freddy Fritz**

**The Ministry: Watering, Working, Warning**

**The Sermon Notes**

**The Sermon Notes**  
(cont)

**The Prayer of Dedication**

# God Commissions Us to Service

## \*The Closing Song

## We Are God's People

*Unison*

1. We are God's peo - ple, the cho - sen of the Lord, born of his  
 2. We are God's loved ones, the Bride of Christ our Lord, for we have  
 3. We are the Bod - y of which the Lord is Head, called to o -  
 4. We are a tem - ple, the Spir - it's dwell - ing place, formed in great

Spir - it, es - tab - lished by his Word; our cor - ner - stone is  
 known it, the love of God out - poured; now let us learn how  
 bey him, now ris - en from the dead; he wills us be a  
 weak - ness, a cup to hold God's grace; we die a - lone, for

Christ a - lone, and strong in him we stand: O let us live trans -  
 to re - turn the gift of love once giv'n: O let us share each  
 fam - i - ly, di - verse yet tru - ly one: O let us give our  
 on its own each mem - ber los - es fire: yet joined in one the

par - ent - ly, and walk heart to heart and hand in hand.  
 joy and care, and live with a zeal that pleas - es heav'n.  
 gifts to God, and so shall his work on earth be done.  
 flame burns on to give warmth and light, and to in - spire.

Bryan Jeffery Leech, 1976

SYMPHONY 11.11.8.6.8.9.  
 From Johannes Brahms, *Symphony No. 1 in C Minor*, 1876  
 Arr. by Fred Bock, 1976

Text and tune © 1976, Fred Bock Music Co. All rights reserved. Used by permission.

**\*The Benediction**

**\*The Postlude**

**\*The Meet and Greet Café**

Have a taste of something special with a new friend!  
The Café Host will serve refreshments for twenty minutes after the service in the overflow section of the sanctuary.

**Welcome to Our Guests**

If you're worshipping with us for the first time, please use the forms in the Friendship Register. They have been placed in each row to enable you to introduce yourself and request additional information about any areas of interest. We consider this our first line of communication and ask that you use it to note your presence each time you worship with us. With the exception of a letter of welcome, we assure you that your privacy will be protected.

**Welcome Lunch**

Pastor Freddy Fritz, his wife Eileen, the TBPC officers and their wives would like to invite you to a Welcome Lunch. These take place every one to two months immediately following the Worship Service. They are hosted at the homes of various members of our leadership. They provide an excellent opportunity for you to get better acquainted, ask questions, and discuss any areas of interest with the pastor and the church leaders. Our next lunch is April 10th.

**Announcements**

**Sign-Ups**

This week, you may sign up on your Friendship Register forms for the following activities:

<u>Item</u>	<u>Code</u>
Info on CH. Dick Fisher's Conference	<b>YLF</b>
Welcome Lunch	<b>WL</b>
Summer Missions Trip	<b>Missions Trip</b>

\*Or contact church office (813-973-2484, office@tampabaypresbyterian.org).

**WIC 15 Meeting**

There will be a WIC 15 meeting after church today. Take a few minutes to greet friends, then meet in classroom #23 at 12:00 to get the latest information on women's events. Think about any concerns or new ideas you may want to share.

**The Trumpet**

The March issue of the *Trumpet* has been sent out by e-mail and posted to the

church web site. Print copies are available today in the church narthex. If you have any trouble accessing the *Trumpet* online or as an e-mail attachment, please contact Doug Knox (813-258-8867).

### **Heartfelt Thanks From The Bentleys**

In times like this, the association with a church family really is an important factor helping us through this period of sadness. Barbara, Dianne, and I thank you for your thoughts and acts of kindness (and in some instances, introducing us to new ways of preparing meals). We are consoled knowing that Bobby is in heaven waiting for us.

### **2011 Church Directory**

The 2011 Church Directory is on the table in the narthex. We suggest one copy per family, if that works for your particular situation.

### **Shepherding Elders**

There is an insert in the Bulletin listing all of the Communicant Members and their Shepherding Elder. Please keep this for reference.

### **Love Gift for Special Needs**

Last Fall TBPC contributed \$809 to the PCA/MNA Special Needs Love Gift. Though the offering is still open through May 2011, the presentation of a check for \$113,000 has been made to MNA Special Needs in February. Stephanie Hubach, MNA Special Needs Ministries Director expresses her thanks.

### **Two Changes for Wednesday Night Supper**

Due to the amazing culinary and shopping skills of Rita Riggs and Jessie Brodbeck, we have enjoyed delicious spreads on Wednesday Night at very reasonable prices. They have also rung up a healthy balance in the account, so for the remainder of the year, we are offering more delicious meals at: Adults (13 yrs+) \$5.00; Child(3 to 12 yrs) \$3.00; under 3 yrs, free, and. maximum family cost, \$15.00. Be sure to thank Rita and Jessie! Remember that the serving line now opens at 5:45.PM.

### **The Gold Rush is On**

Planning has begun for vacation bible school. July 11-15, children 4 years old to 5th grade will have an exciting adventure: *Gold Rush-Discovering the Rock of Ages*. It takes over 50 volunteers to staff and prepare for this program; teachers, group leaders, snack helpers, craft helpers, a drama director, actors, and more. For those volunteering, the first meeting Monday, March 28, at 7:00 p.m. (childcare provided upon request). For more information, contact Cheryl Barber (813-494-5380).

### **No Wednesday Night Activities This Week**

March 16<sup>th</sup>: This Wednesday Night will be spring break for Pioneer club, choir practices, prayer meeting, and Family Night Dinner. Everything returns to normal the following week.

### **Pacesetters' Lunch**

March 16<sup>th</sup>: At 12:30 p.m. the Pacesetters will be meeting at the Asian Buffet (1742 Bruce B. Downs Blvd., Wesley Chapel, FL 33544, next to the Bealls, across from Wiregrass). For \$7.99 (less Senior Discount) for all of the fun, food, and fellowship you can handle. RSVP Randi Mallary (813-972-0504).

### **Emptynesters' Lunch**

March 20<sup>th</sup>: At 12:30 p.m. the Emptynesters will be meeting at the Olive Garden (on Bruce B. Downs). Join them for the fun after the Worship Service. RSVP Jan Ousnamer (813-862-3862) by Saturday, March 19<sup>th</sup> to reserve a seat.

### **Care Ministry Working Lunch Schedule**

March 23<sup>rd</sup> through April 13<sup>th</sup>: Except for Wednesday, March 16, there will be a working lunch at 11:30 a.m. each Wednesday in the church. The project is really coming together. Come and join the love and laughter, soup and salad that goes along with the work!

### **Spring Quarter CE&F Classes**

April 3<sup>rd</sup> through June 26<sup>th</sup>: From 9:00 a.m. to 10:15 a.m. on Sunday morning, we are offering these new class choices:

**Worldviews and Their Impacts** examines the bedrock questions that govern how people view the world around them (the nature of truth, where we came from, what went wrong, how we can fix it, our purpose in life). The prevailing answers to these questions undergird personal beliefs and popular cultures. If as Christians you seek to have an impact on our culture, this class can help you understand its foundations and provide you with information to help change hearts and minds on the moral issues of the day.

Teacher: **Joe Burns**

**Survey of the New Testament** will provide an overview or "big picture" perspective in Jack B. Scott's book of this title. To be examined: how the New Testament fits with the Old, some of the history and culture surrounding the writing of the N.T. books, and the meaning of these texts to their first readers. Each lesson includes application of New Testament scriptural truth to our 21st century lives. Come learn how a survey study can enrich your familiarity with God's Word and its meaning for your walk with him.

Teacher: **Doug Hayman**

**MorningWalk**, a Christian living class, is designed to cultivate friendship and prayer partnerships for women of all ages. Our focus for this spring will be a continuing study of the book *When Helping Hurts*, by Steve Corbett & Brian Fokker, which examines, in light of biblical principles, our common mindset on relieving poverty, with application to both localized and globalized mercy ministry. And, how is this subject relevant to our personal relationships?

Teacher: **Eileen Fritz**

### **Missions Trip Car and Dog Wash**

April 2<sup>nd</sup>: There will be a car and dog wash from 10:00 a.m. until 1:00 p.m. in the church parking lot. The funds raised will help support the Summer Missions Team Trip to minister to Native Americans in Cherokee, NC, from July 30 to August 6. Come out and get a clean car and/or dog and contribute to the Summer Missions Team.

### **2011 Leadership Consultation**

April 4<sup>th</sup>, 5<sup>th</sup>, and 6<sup>th</sup>: Put the theme of our recent Missions Conference, "Enlarge My Vision" to work with Chaplain Dick Fisher at the Orlando 2011 Leadership Consultation Conference. In keeping with it's theme, "Revitalizing and Reshaping Evangelism and Missions in the U.S" ([www.missionamerica.org](http://www.missionamerica.org)). Chaplain Fisher has been invited to present tools he has developed to share the Gospel. **You Were Made to Last Forever Ministries** ([www.youlastforever.com](http://www.youlastforever.com)) needs people to come enjoy the fellowship hundreds of Christians focused on this vital topic and how **YLF** can impact it. From 9:00 a.m. to 9:00 p.m., if you have a few hours or a whole day available and want to hear more, please write "**YLF**" on your Friendship Register form or contact Chaplain Dick Fisher (352-567-339, evenings are best).

### **Annual Talent Show**

April 9<sup>th</sup>: From 6 p.m. to 8 p.m. we have the Annual TBPC Talent Show to raise funds for our Summer Missions Trip. Have you ever wondered if God will be happy with how you use the talents he is letting you borrow? This year the Talent Show will be focusing on how to really use our talents and not waste them. Come and see the show and bring a pie to enter in the Pie Contest. It will be entertaining, educational and there's pie for dessert. Contact Eileen Fritz for details on the Pie Contest (813-731-0457) and Bett Correa for details on the Talent Show (813-690-6739).

## Calendar—This Week

Today

- 9:00 a.m.      Sunday School for Children
  - Older Elementary ..... Room 21
  - Preschool ..... Room 15
- 9:00 a.m.      Youth Sunday School
  - Jr. & Sr. High ..... Room 18
  - Communicant’s Class ..... Room 2
  - Christian Education & Fellowship
    - Choosing My Religion -
      - R.C. Sproul video ..... Room 22
    - Covenants-God’s Way with
      - His People ..... Room 20
    - MorningWalk..... Room 23
- 10:30 a.m.    Worship Service
- 1:00 p.m.      Phos Youth Group
- 7:30 p.m.      Kirkpatrick Growth Group

Tuesday

- 7:00 p.m.      Pothoven Growth Group

Wednesday

- 9:00 a.m.      Women’s Bible Study
- 12:30 p.m.    Pacesetters’ Lunch
- 5:45 p.m.      NO FAMILY NIGHT DINNER, PRAYER MEETING,  
PIONEER CLUB, OR CHOIR PRACTICE

Thursday

- 7:00 p.m.      Diaconate and Session Meetings

Saturday

- 7:45 a.m.      Men’s Bible Study
- Men’s Discipleship Group

## Calendar—Upcoming Events

- March 20—      Emptynesters’ Lunch
  - Phos Youth Group
  - Nobles Growth Group
- March 23—      Women’s Bible Study
  - Family Night Dinner
  - Dare 2 Declare Choir Rehearsal
  - Kids of the King Choir Rehearsal
  - Prayer Meeting
  - Pioneer Club
  - Worship Choir Rehearsal
- March 26—      Men’s Bible Study
  - Men’s Discipleship Group



## This Week's Volunteers

Welcome Table..... Gary and Keri Gawrich  
 Greeters ..... Ed and Jan Ousnamer  
 Ushers ..... Vince Hladek, Bill Campbell, and Roy Hunter  
 Children's Church ..... Javier and Patty Lugo  
 Nursery ..... Wicke Egbert, Eric and Luana Isaac  
 Deacon on Duty ..... Jonathan Massie

## Next Week's Volunteers

Welcome Table..... Brian and Alisa Carrier  
 Greeters ..... Phil and Chris Lear  
 Ushers ..... Jonathan Massie and Roger Kaiser  
 Children's Church ..... Brad and Alisha Collier  
 Nursery ..... Alisa Carrier and Julissa Rhoden  
 Deacon on Duty ..... Bob McQueen

<b>Treasurer's Corner</b>			
<b>General Fund Income &amp; Expense</b>			
<b>Seven Months Ended February 28, 2011</b>			
	<u>Budget</u>	<u>Actual</u>	<u>Variance</u>
General Fund Giving	\$ 202,983	\$ 199,534	\$ (3,448)
Other Income (Interest, Rent, etc.)	\$ 7,438	\$ 13,401	\$ 5,964
General Fund Expenses	\$ 210,420	\$ 202,414	\$ (8,006)
Ahead (Behind)	<u>\$ 0</u>	<u>\$ 10,522</u>	<u>\$ 10,522</u>
<b>Missions Fund</b>			
Goal		\$ 36,518	
Total pledged for 2010-2011		\$ 15,940	
Funds received 3/1/2010-2/28/2011		\$ 23,831	
(Unaudited figures -- for internal use only.)			

# Prayer Requests

## **Membership**

For Membership Ministry Teams: Class 101, Prayer, Emptynesters, Hospitality, Meals, Nursery, and Pacesetters.

Pray for **Patricia Wilcox**, sister of Roy Riley (test results); Mac and Dora Burchfield's son, **Dwayne Burchfield** (cancer); **John Andel** (chronic condition); **Ed Kociela** (surgery); **Mac Burchfield** (rehabilitation from stroke); **Bruce Freshwater** (pancreatic cancer); **Frank Tobar** (at home from rehabilitation center); **Ben Vuolo** (pancreatic cancer).

Pray for healthy pregnancies: **Alisha Collier** (July); John and Bonnie Hutton's daughter-in-law, **Virginia Hutton** on restricted activity (March).

Pray for those actively serving in our country's military: **Todd Carrier** (Army); son of Ginny Bremer, **Thomas Briggs** (Naval Reserve/currently deployed); daughter of Bob & Dale Moore, **Michelle Callahan** (Army); **Marty Easter** (USAF); nephew and son-in-law of Joe & Cindy Burns, **Matt Frazier** (USMC) & **Curtis Miller** (USMC); and brother of Jama Dale, **Jason Terry** (USAF).

Pray for those young adults who are away at college: daughter of Bert & Cheryl Barber, **Melody Barber** (UCF); son of Freddy & Eileen Fritz, **Jon Fritz** (USM); daughter of Jim & Judy Weir, **Grace Weir** (Wake Forest—in Australia this semester); **Julie Welzien** (PHCC).

Pray for **Lou and Barbara Bentley** as they grieve the death of their son.

## **Maturity**

For Maturity Ministry Teams: Class 201, Adult C. E., Youth, Children, Growth Groups, Women's Bible Study, and WIC.

Pray for TPBC members to read their Bibles daily in 2011.

Pray for TBPC members to memorize Scripture in 2011.

Pray that the men in the Men's Discipleship Group will grow in maturity.

## **Ministry**

For Ministry Teams: Class 301, and Ministry Deployment.

That every member will be involved in a ministry at the Tampa Bay Presbyterian Church.

## **Missions**

**Carla Stevens:** Carla has much to give thanks for: new friends from the PCA Global Missions Conference and much enthusiasm for Christian schools conveyed by missionaries and leaders who attended; a slowly-improving support account thanks to several new and renewed supporters – new church partners are pending and more visits to potential supporting churches are scheduled; her Regent University courses for her D. Ed. are a "perfect fit" for her needs to be better prepared to serve teachers (2 semesters down, 5 to go). She praises God for all "good gifts" from her Father above!

**Don & Judy Vander Ploeg:** Some 2011 changes and challenges: They've packed a crate for shipment back to the States for their one-year Home Ministry Assignment (HMA), beginning the end of July. Before leaving they have a bi-annual Wycliffe conference to attend in March, son Ben reports to Ft. Jackson, SC, for Army basic training in April, end of the school year in June (remember Judy teaches), and some time spent in Australia in July for minor surgery and recovery. They would like to return the following summer to PNG to assist at another Wycliffe regional center.

***Magnification***

For Magnification Ministry Teams: Worship Service, Music Ministry, Greeters, and Ushers.

That God will be glorified through our worship.

***Session***

For the Session as they shepherd all the members in their care.

For the Session as they seek the right candidate to become a Pastoral Intern at TBPC.

***Diaconate***

That the Diaconate will have wisdom about finances, property and benevolence.

***Administration***

That the staff will have wisdom in serving the mission of Tama Bay Presbyterian Church.

***Personnel***

That our pastor will remain true to God's Word in his preaching, teaching and life applications.

## Mission

To bring people to Jesus Christ and **membership** in his church family, develop them to Christlike **maturity**, equip them for their **ministry** in the church and life **mission** in the world, in order to **magnify** God's name.

### Staff

Pastor ..... Rev. Freddy Fritz  
Office Administrator .....Melissa Noel  
NTCA Director .....Cheryl Barber  
Custodian .....Chris Christopher  
Nursery Coordinator (p/t) ..... Marianne Cali  
Music Director (p/t) .....Debi Hensley  
Bookkeeper (p/t)..... Joanne Campbell  
Children's Director (p/t) .....Cheryl Barber  
Youth Director (p/t) .....James Barber  
Pianist (p/t) .....Debi Hensley  
Pastor's Assistant (p/t)..... Bob Guest

### Missionaries

Nathaniel & Cherita Adawonu ..... NHMI  
Dick Fisher ..... MNA Chaplain  
Esaie & Natacha Etienne ..... MTW  
Jeff & Jenny Lee ..... RUF  
Larry & Laura Hardie..... Navigators  
Pam Johnston .. Chamberlain-Hunt Academy  
Ken & Tammy Matlack..... MTW  
Rene & Lilli Palacio..... SIM  
Carla Stevens ..... MTW  
Don & Judy Vander Ploeg..... Wycliffe

### Session

Jim Aldrich  
Bert Barber  
Freddy Fritz (Moderator)  
Fred Gordon  
Doug Hayman  
Joe Kirkpatrick

### Session (cont.)

Kevin Nobles  
Ken Pothoven (Clerk)

### Diaconate

Mike Bowman  
Brad Collier  
Rick Donaldson  
Bob Guest  
Jonathan Massie  
Bob McQueen (Chairman)

### Ministry Teams

#### Membership

Class 101  
Emptynesters  
Hospitality  
Nursery  
Pacesetters  
Prayer

#### Maturity

Class201  
Adult CE&F  
Children  
Growth Groups  
Men's Bible Study  
Women's Bible Study  
Women in the Church  
Youth

#### Ministry

Class 301  
Ministry Deployment

#### Missions

Class 401  
Church Planting  
Missions  
NTCA  
Outreach

#### Magnification

Worship Service  
Music Ministry  
Greeters  
Ushers